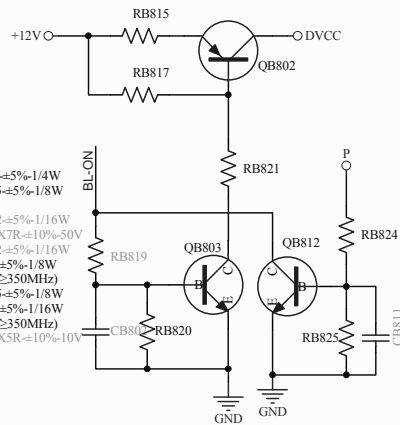
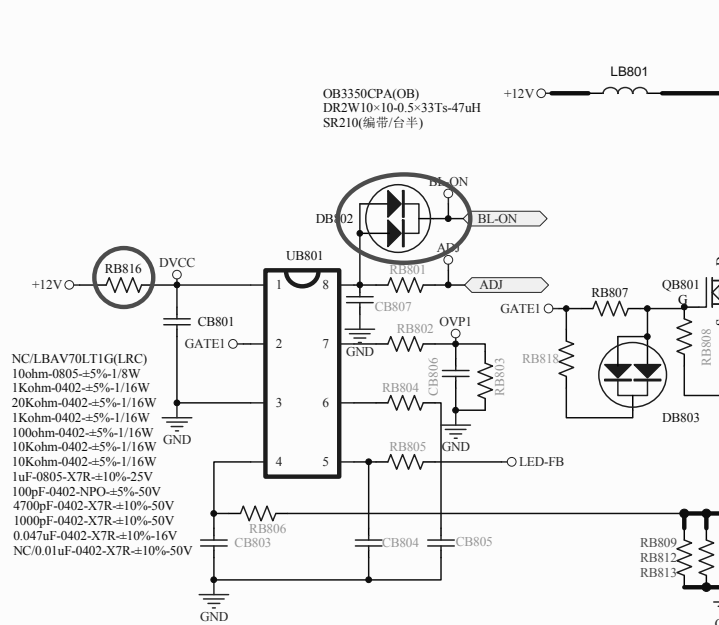


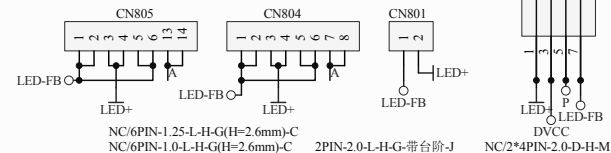
NC/100ohm-1206 \pm 5%-1/4W
NC/10Kohm-0805 \pm 5%-1/8W
NC/3CG3906M
NC/10Kohm-0402 \pm 5%-1/16W
NC/0.01uF-0402-X7R \pm 10%-50V
NC/10Kohm-0402 \pm 5%-1/16W
NC/3Kohm-0805 \pm 5%-1/8W
NC/MMBT3904(f_c 350MHz)
NC/20Kohm-0805 \pm 5%-1/8W
NC/2Kohm-0402 \pm 5%-1/16W
NC/MMBT3904(f_c 350MHz)
NC/0.22uF-0402-X5R \pm 10%-10V



NC/LBAV70LT1G(LRC)
10ohm-0805 \pm 5%-1/8W
1Kohm-0402 \pm 5%-1/16W
20Kohm-0402 \pm 5%-1/16W
1Kohm-0402 \pm 5%-1/16W
100ohm-0402 \pm 5%-1/16W
10Kohm-0402 \pm 5%-1/16W
10Kohm-0402 \pm 5%-1/16W
1uF-0805-X7R \pm 10%-25V
100pF-0402-NPO \pm 5%-50V
4700pF-0402-X7R \pm 10%-50V
1000pF-0402-X7R \pm 10%-50V
0.047uF-0402-X7R \pm 10%-16V
NC/0.01uF-0402-X7R \pm 10%-50V



NC/22pF-0805-NPO \pm 5%-100V
10Kohm-0402 \pm 5%-1/16W
CC45SL3AD470JYPNA(TDK)
0R33ohm-1206 \pm 5%-1/4W
0R33ohm-1206 \pm 5%-1/4W
0R33ohm-1206 \pm 5%-1/4W
100ohm-0805 \pm 5%-1/8W
LBAV70LT1G(LRC)
ME15N10(松木)



Title		
Size B	Number TP.VST59.P63A LED DIRVER	Revision V1.0
Date: 2013/7/16	Sheet of	
File: E:\V59_01_MAIN POWER-LED Driver	Drawn By: S.H.W.	





